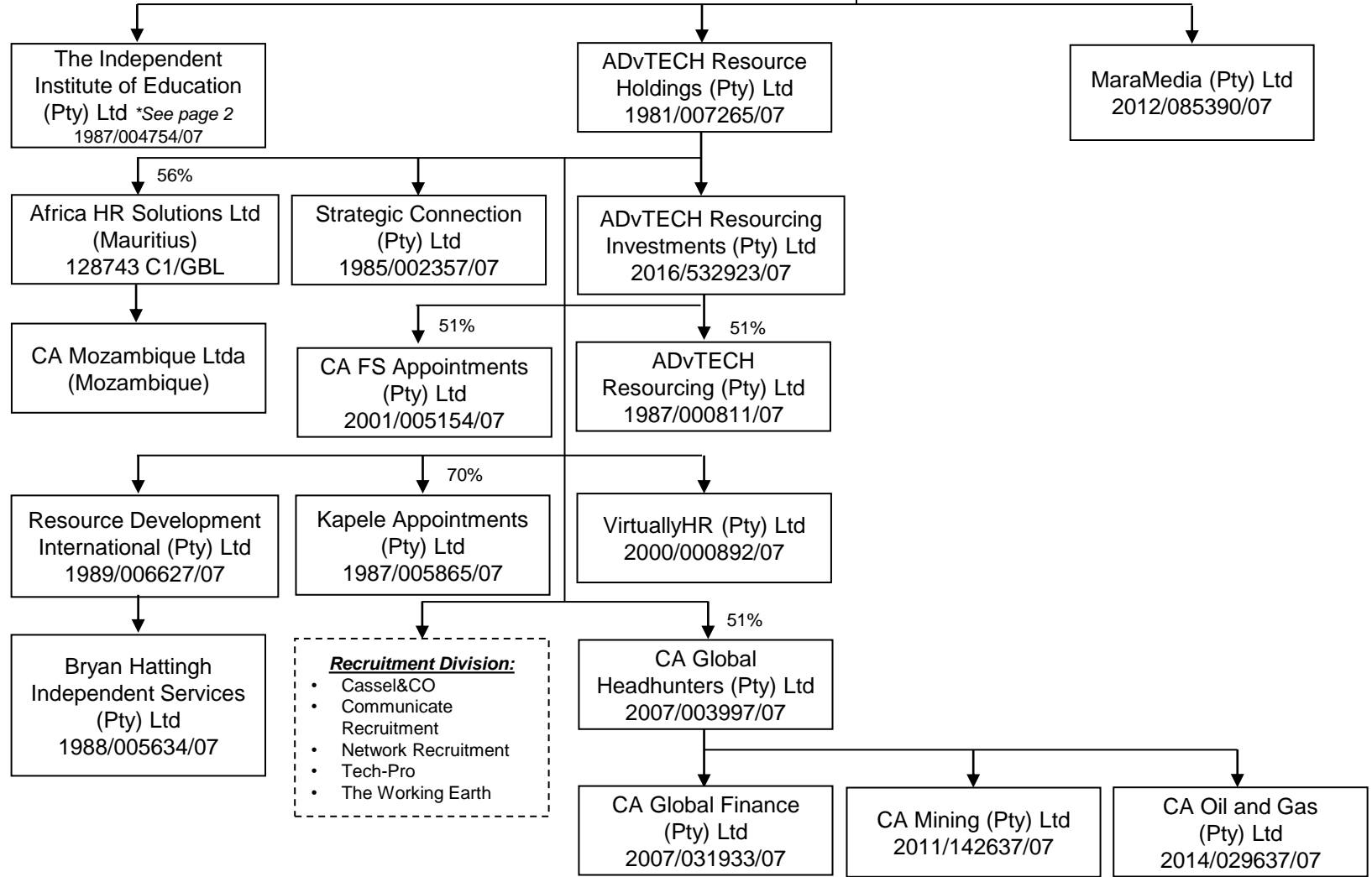
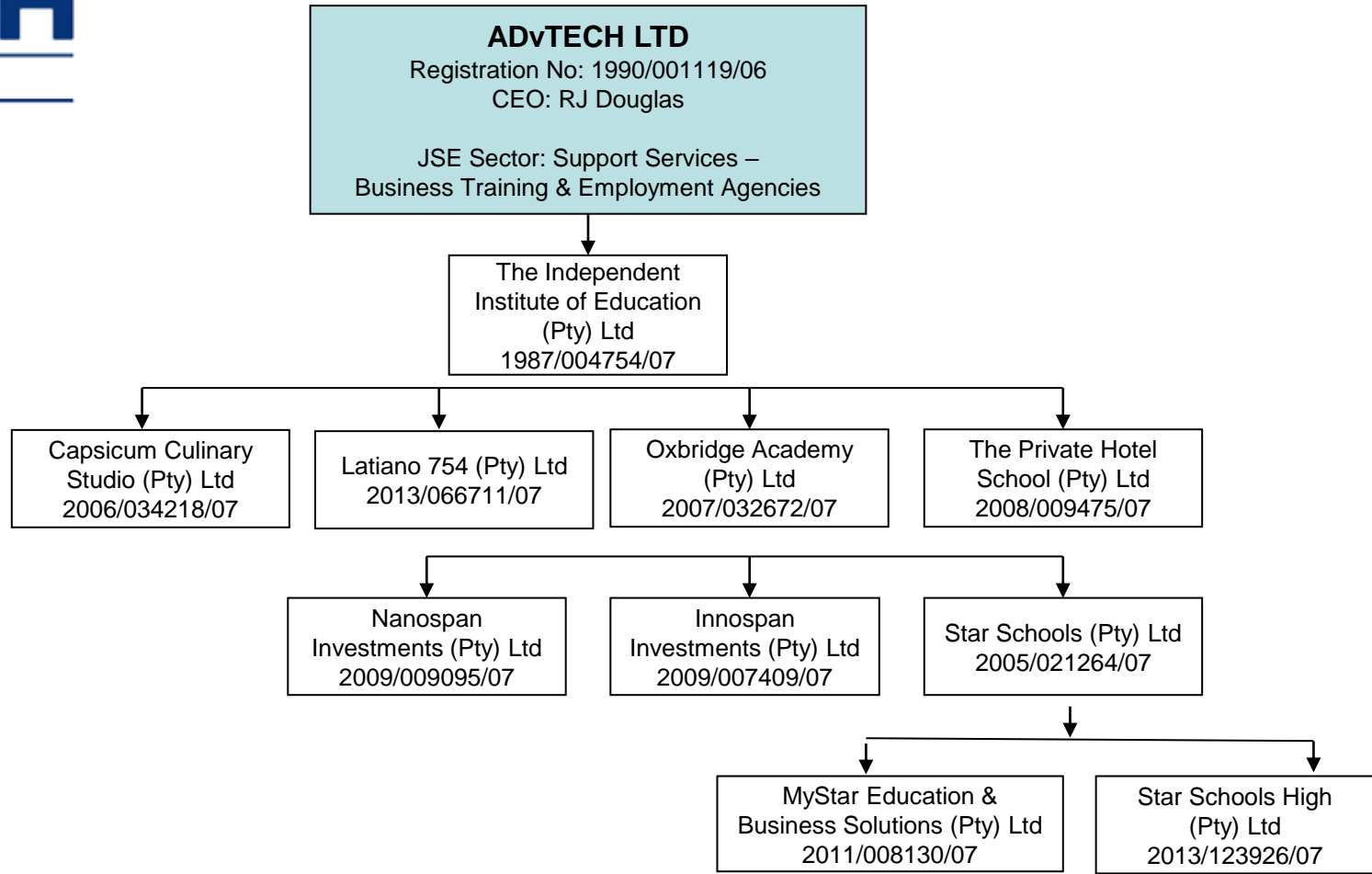


ADvTECH LTD
 Registration No: 1990/001119/06
 CEO: RJ Douglas

JSE Sector: Support Services –
 Business Training & Employment Agencies





- Schools Division:**
- Abbotts College
 - Crawford International Kenya
 - Crawford Schools South Africa
 - Evolve Online
 - Junior Colleges
 - Makini Schools
 - Pinnacle Colleges
 - The Bridge Assisted Learning Centre
 - House Schools

- Tertiary Division:**
- IIE Rosebank College
 - IIE Varsity College
 - IIE Vega
 - IIE MSA
 - IIE School of Hospitality and Service
 - MindSharp

